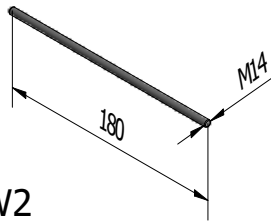


REVELATIO 1

OKUCIA

ELEMENT	sztuk
SG2	8
SG3	4
N1	24
P1	24
SW2	2
K1	4
K5	6
U1	2
U2	2
W4	28
W6	60
W9	8
W10	28

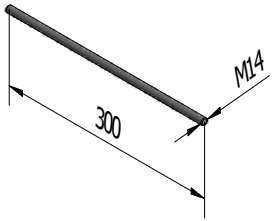
SG2



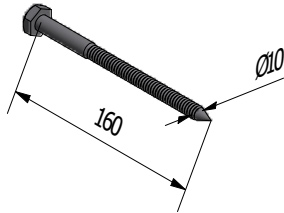
W2 $\varnothing 4 \times 40 \#$



SG3



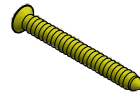
SW2



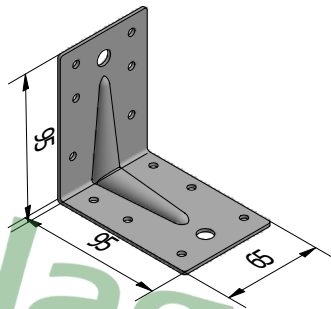
W4 $\varnothing 4 \times 60$



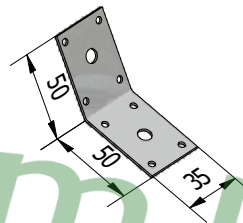
W6 $\varnothing 5 \times 45$



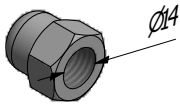
K1



K5



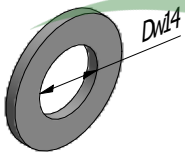
N1



OKUCIA konstrukcja z deską

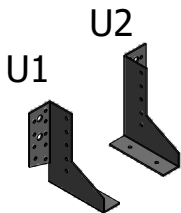
ELEMENT	sztuk
W2	64
G3#	580

P1

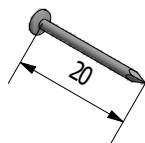


OKUCIA konstrukcja z gontem

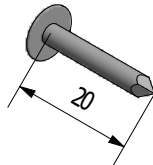
ELEMENT	sztuk
G1*	14
G2*	1020
O1*	2
O2*	2



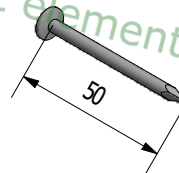
G1*



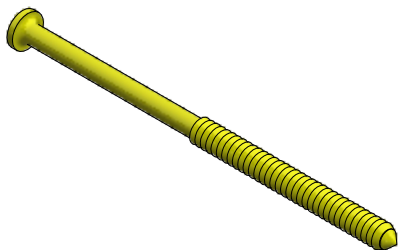
G2*



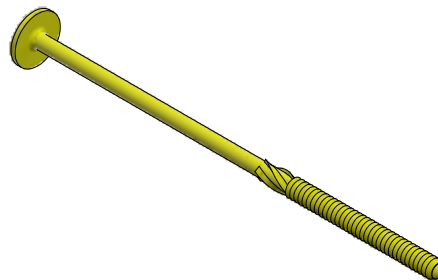
G3#



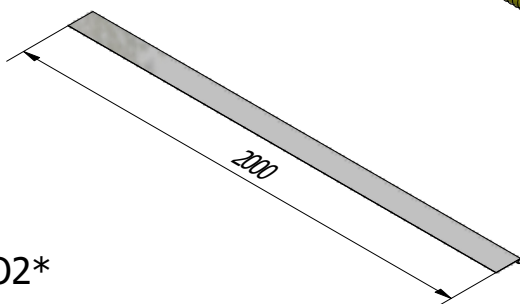
W9 $\varnothing 6 \times 160$



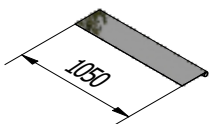
W10 $\varnothing 8 \times 180$



O1*



O2*



* pozycje dostępne, przy zakupie konstrukcji z gontem

pozycje dostępne, przy zakupie konstrukcji z deską